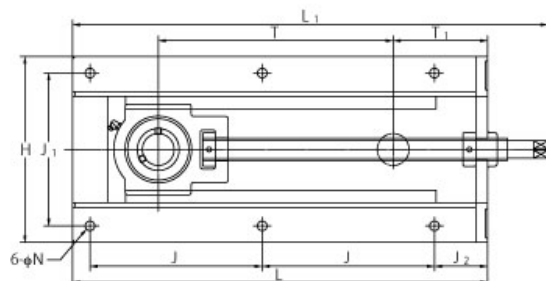
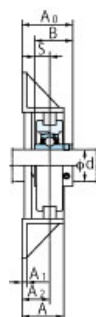
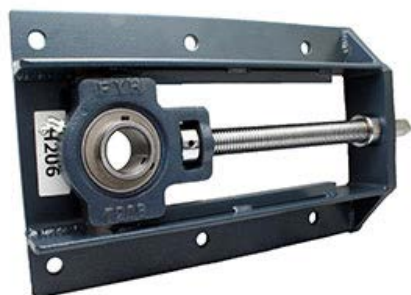


UCTH205-16J-150



| | |
|---------|-----------------|
| 样式 | |
| 轴承座型号 | H204.5-150 |
| 轴承公称型号 | UC205-16 |
| 轴径 | 1 in |
| 轴承座固定螺栓 | M10 3/8 in |
| 质量 | 6.7 kg 14.77 lb |
| 轴固定方法 | 顶丝 |
| 适用油嘴 | B-1/4-28UNF |

| | |
|------|--------------------|
| 主要尺寸 | |
| H | 200 mm 7-7/8 in |
| L | 318 mm 12-17/32 in |
| L1 | 377 mm 14-27/32 in |
| A | 50 mm 1-31/32 in |
| J | 117 mm 4-39/64 in |
| J1 | 154 mm 6-1/16 in |
| J2 | 65 mm 2-9/16 in |
| N | 12 mm 15/32 in |
| T | 152 mm 5-1/32 in |
| T1 | 88 mm 3-15/32 in |
| A1 | 6 mm 1/4 in |
| A2 | 28 mm 1-7/64 in |
| A0 | 47.8 mm 1-7/8 in |
| B | 34.1 mm 1.343 in |
| S | 14.3 mm 0.563 in |

| | |
|--------|------------------|
| 基本额定负荷 | |
| Cr | 14.0 kN 3147 lbf |
| Cor | 7.85 kN 1765 lbf |
| 系数 fo | 13.9 |