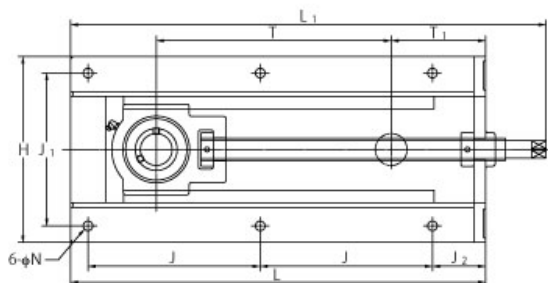
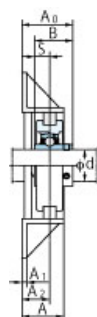
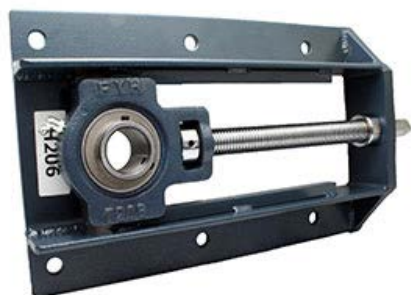


UCTH206-19J-150



样式	
轴承座型号	H206-150
轴承公称型号	UC206-19
轴径	1-3/16 in
轴承座固定螺栓	M10 3/8 in
质量	8.0 kg 17.64 lb
轴固定方法	顶丝
适用油嘴	B-1/4-28UNF

主要尺寸	
H	213 mm 8-3/8 in
L	336 mm 13-7/32 in
L1	407 mm 16-1/32 in
A	50 mm 1-31/32 in
J	126 mm 4-31/32 in
J1	166 mm 6-17/32 in
J2	65 mm 2-9/16 in
N	12 mm 15/32 in
T	143 mm 5-5/8 in
T1	100 mm 3-15/16 in
A1	6 mm 1/4 in
A2	32 mm 1-17/64 in
A0	54.2 mm 2-1/8 in
B	38.1 mm 1.500 in
S	15.9 mm 0.626 in

基本额定负荷	
Cr	19.5 kN 4384 lbf
Cor	11.3 kN 2540 lbf
系数 fo	13.9