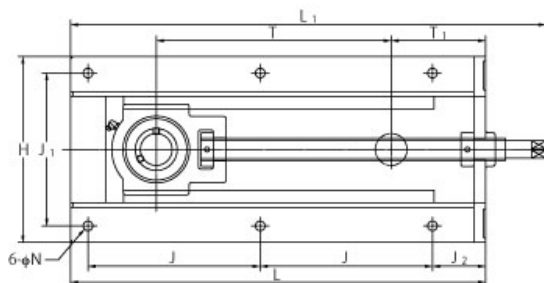
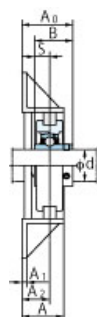
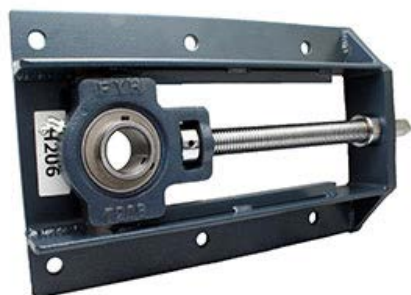


UCTH208-25J-300



样式	
轴承座型号	H208.9-300
轴承公称型号	UC208-25
轴径	1-9/16 in
轴承座固定螺栓	M10 3/8 in
质量	12.5 kg 27.56 lb
轴固定方法	顶丝
适用油嘴	B-1/4-28UNF

主要尺寸	
H	234 mm 9-7/32 in
L	523 mm 20-19/32 in
L1	599 mm 23-19/32 in
A	50 mm 1-31/32 in
J	217 mm 8-35/64 in
J1	166 mm 7-9/16 in
J2	67 mm 2-5/8 in
N	12 mm 15/32 in
T	296 mm 11-21/32 in
T1	119 mm 4-11/16 in
A1	6 mm 1/4 in
A2	35 mm 1-3/8 in
A0	65.2 mm 2-9/16 in
B	49.2 mm 1.937 in
S	19 mm 0.748 in

基本额定负荷	
Cr	29.1 kN 6542 lbf
Cor	17.8 kN 4002 lbf
系数 fo	14.0