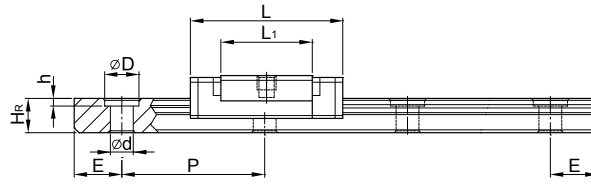
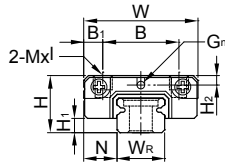
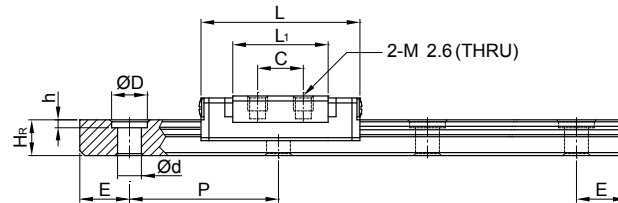
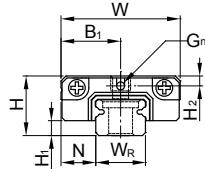


### (3) MGN-C-O / MGN-H-O

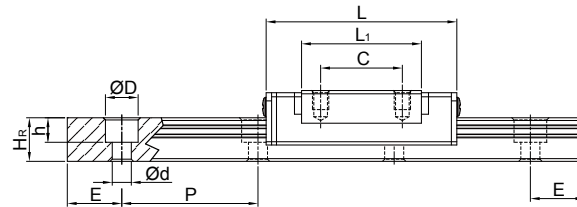
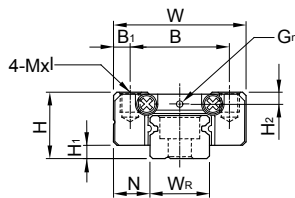
#### MGN5-O



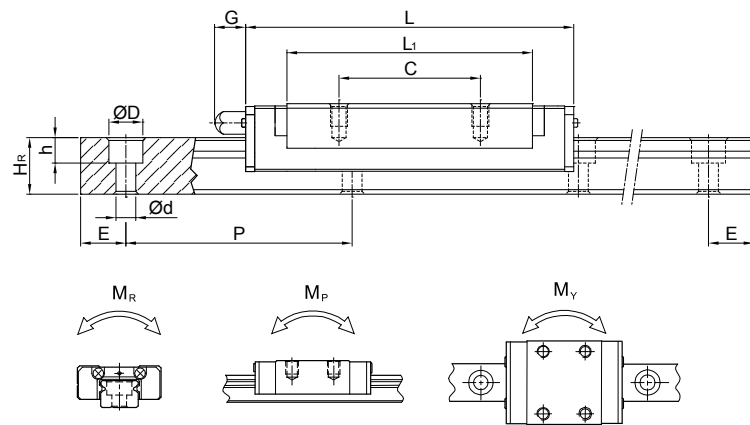
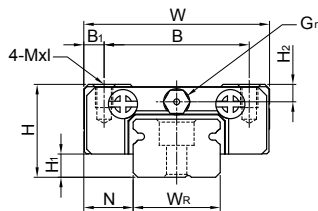
#### MGN5HL-O



#### MGN7-O, MGN9-O, MGN12-O



#### MGN15-O



型号	组件尺寸 (mm)			滑块尺寸 (mm)										导轨尺寸 (mm)								导轨的 固定螺栓 尺寸	基本 额定 定负荷	基本 额定 定负荷	容许静力矩			重量	
	H	H <sub>1</sub>	N	W	B	B <sub>1</sub>	C	L <sub>1</sub>	L	G	G <sub>n</sub>	MxL	H <sub>2</sub>	W <sub>R</sub>	H <sub>R</sub>	D	h	d	P	E	(mm)	C(kN)	C <sub>0</sub> (kN)	M <sub>R</sub>	M <sub>P</sub>	M <sub>Y</sub>	滑块	导轨	
																								N-m	N-m	N-m	kg	kg/m	
MGN 5C-O	6	1.5	3.5	12	8	2	-	9.6	16	-	0.8	M2x1.5	1	5	3.6	3.6	0.8	2.4	15	5	M2x6	0.54	0.84	2	1.3	1.3	0.003	0.15	
MGN 5H-O					M2x1.5	0.67	1.08	2.6	2.3			2.3										0.004							
MGN 5HL-O					-	6	7	12.6	19			M2.6-THRU										0.67	1.08	2.6	2.3	2.3	0.004		
MGN7C-O	8	1.5	5	17	12	2.5	8	13.5	22.5	-	Ø1.2	M2×2.5	1.5	7	4.8	4.2	2.3	2.4	15	5	M2x6	0.98	1.24	4.70	2.84	2.84	0.008	0.22	
MGN7H-O					12	2.5	13	21.8	30.8			M2×2.5										1.37	1.96	7.64	4.80	4.80	0.012		
MGN 9C-O	10	2.2	5.5	20	15	2.5	10	19.4	30	-	Ø1.4	M3x3	1.8	9	6.5	6	3.5	3.5	20	7.5	M3x8	2.01	2.84	13.05	8.97	8.97	0.012	0.38	
MGN9H-O					15	2.5	16	29.3	39.9			M3x3										2.5	3.93	19.71	21.47	21.47	0.02		
MGN 12C-O	13	3	7.5	27	20	3.5	15	22	35	-	Ø2	M3x3.5	2.5	12	8	6	4.5	3.5	25	10	M3x8	2.84	3.92	25.48	13.72	13.72	0.025	0.65	
MGN12H-O					20	3.5	20	34.6	47.6			M3x3.5										4.27	5.9	38.4	37.49	37.49	0.047		
MGN 15C-O	16	4	8.5	32	25	3.5	20	26.7	41.3	4.50	M3	M3x4	3	15	10	6	4.5	3.5	40	15	M3x10	4.61	5.59	45.08	21.56	21.56	0.057	1.06	
MGN 15H-O					25	3.5	25	43.4	58			M3x4										6.37	9.11	73.5	57.82	57.82	0.088		

注：1 kgf = 9.81 N