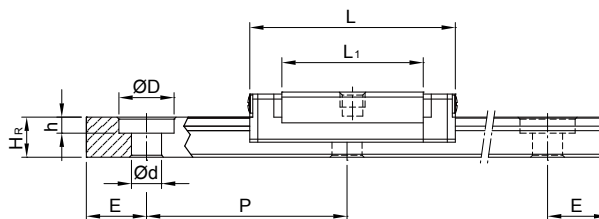
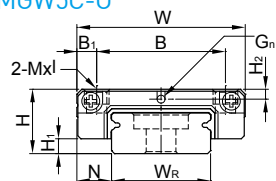
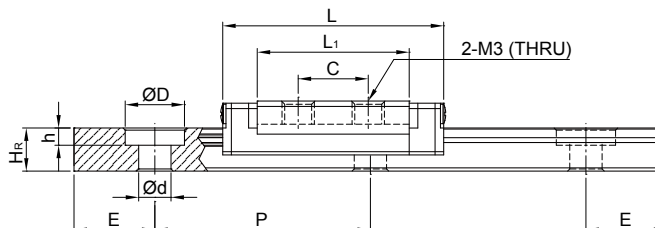
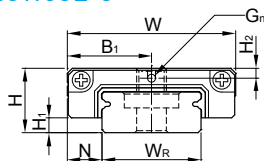


#### (4) MGW-C-0 / MGW-H-0

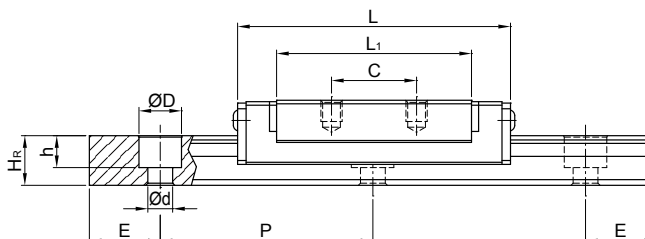
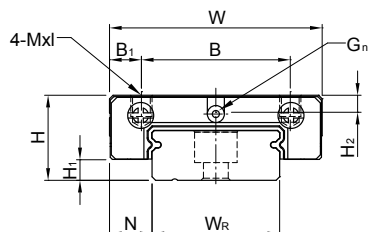
MGW5C-0



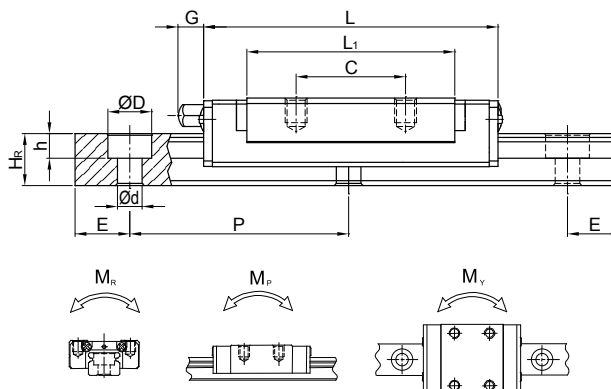
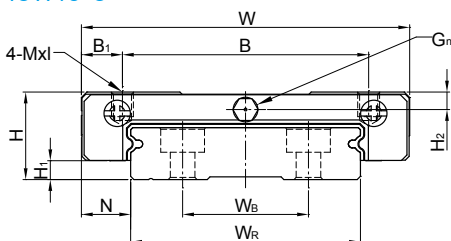
MGW5CL-0



MGW7-0, MGW9-0, MGW12-0



MGW15-0



型号	组件尺寸 (mm)			滑块尺寸 (mm)										导轨尺寸 (mm)										导轨的 固定螺栓 尺寸	基本 动额 定负荷	基本 静额 定负荷	容许静力矩					重量	
	H	H <sub>1</sub>	N	W	B	B <sub>1</sub>	C	L <sub>1</sub>	L	G	G <sub>n</sub>	MxL	H <sub>2</sub>	W <sub>R</sub>	W <sub>B</sub>	H <sub>R</sub>	D	h	d	P	E	(mm)	C(kN)				C <sub>0</sub> (kN)	M <sub>R</sub> N-m	M <sub>P</sub> N-m	M <sub>V</sub> N-m	滑块 kg	导轨 kg/m	
MGW 5C-0	6.5	1.5	3.5	17	13	2	-	14.1	20.5	-	Ø0.8	M2.5x1.5	1	10	-	4	5.5	1.6	3	20	5	M2.5X7	0.68	1.18	5.5	2.7	2.7	0.006	0.34				
MGW 5CL-0					-	8.5	6.5	14.1	20.5			M3-THRU											0.68	1.18	5.5	2.7	2.7	0.006					
MGW 7C-0	9	1.9	5.5	25	19	3	10	21	31.2	-	Ø1.2	M3x3	1.85	14	-	5.2	6	3.2	3.5	30	10	M3×6	1.37	2.06	15.70	7.14	7.14	0.018	0.51				
MGW 7H-0					19	3	19	30.8	41			M3x3											1.77	3.14	23.45	15.53	15.53	0.026					
MGW 9C-0	12	2.95	6	30	21	4.5	12	27.5	39.7	-	Ø1.2	M3x3	2.65	18	-	7	6	4.5	3.5	30	10	M3x8	2.75	4.12	40.12	18.96	18.96	0.038	0.91				
MGW 9H-0					23	3.5	24	38.5	50.7			M3x3											3.43	5.89	54.54	34.00	34.00	0.053					
MGW 12C-0	14	3.45	8	40	28	6	15	31.3	45.1	-	Ø1.2	M3x3.6	2.8	24	-	8.5	8	4.5	4.5	40	15	M4x8	3.92	5.59	70.34	27.8	27.8	0.066	1.49				
MGW 12H-0					28	6	28	45.6	59.4			M3x3.6											5.1	8.24	102.7	57.37	57.37	0.093					
MGW 15C-0	16	3.45	9	60	45	7.5	20	38	53.8	5.2	M3	M4×4.2	3.2	42	23	9.5	8	4.5	4.5	40	15	M4×10	6.77	9.22	199.34	56.66	56.66	0.138	2.86				
MGW 15H-0					45	7.5	35	57	72.8			M4×4.2											8.93	13.38	299.01	122.60	122.60	0.200					

注 : 1 kgf = 9.81 N